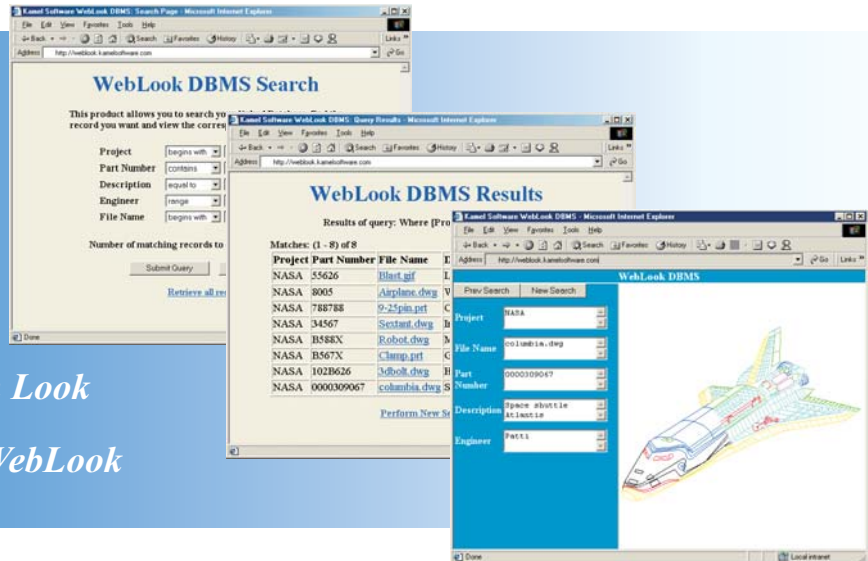


Publish Drawings and Images to the Web

WebLook DBMS

www.kamelsoftware.com

- *Set-up In Minutes*
- *No HTML Necessary*
- *Use Existing Databases*
- *Create Multiple Projects*
- *Create Your Own Custom Look*
- *Companion Product To WebLook*



WebLook DBMS Overview

The WebLook DBMS is designed to work in conjunction with the WebLook viewer to publish a database of drawings and images to the Web. This will allow your Intranet, Extranet and Internet users to utilize their browser to search a database in order to find and view the drawings they need. The WebLook DBMS is used to quickly and simply create a project which will automatically create and present a Search page, a Results page and a View page to the user's browser. Knowledge of, or ability to write, HTML code is NOT required.

The WebLook DBMS is perfect for moving document management quickly and easily to the Web. Allow access to drawings and images by supply chain partners, customers and your own personnel. Users can search the database by the selection criteria you control.

Securely grant access to drawings and images for sales, production, maintenance, purchasing, etc.. You may create multiple WebLook DBMS Projects for different search or presentation needs.

The DBMS can be linked directly to your existing database and the options selected in minutes. If you currently do not have a database and wish to create one, you may use our FastLook DBMS Module to do so. In your creation of the WebLook DBMS Project, you will set which fields will be displayed in each of the pages and what name to display for each field, if you wish it to be different from the real field name. You will have easy control over the Headings and explanation text for each page as well as the background, fonts and color schemes to use for each page through the use of standard Style Sheets.

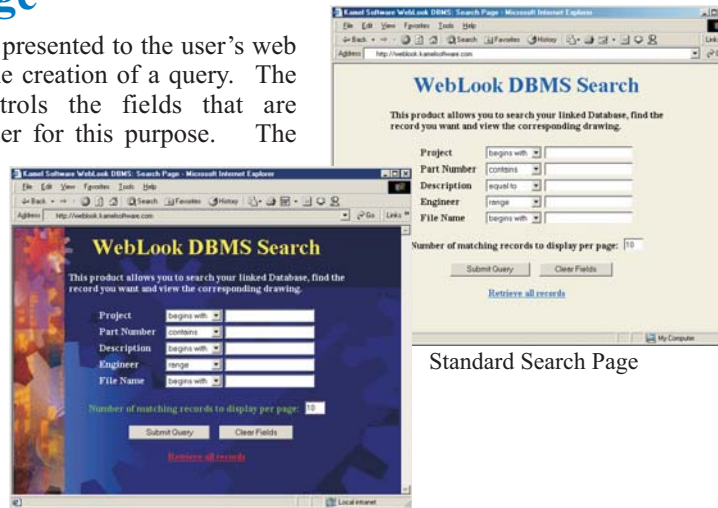
In operation, the user will be presented a Search page with the fields you specify in the project. He will enter his search criteria and then be presented with a Results page containing all the records that match the query. The user will click on the record that he wishes to view and, depending on your project election, he will either be presented with the View page (an interface containing the data from the data file alongside the view of the selected drawing) or will view the selected drawing full screen in the browser.

All of the WebLook viewer's commands are available on the right-click context menu in the drawing window, including drawing markup tools (with the optional Redline Module). Search, view, markup and print, all from one easy-to-use interface.



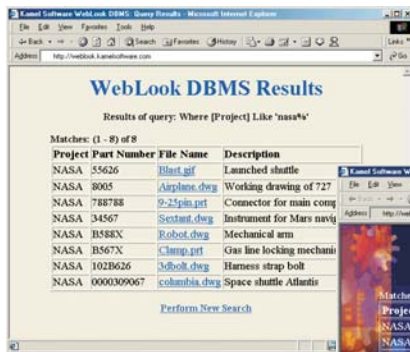
Search Page

The Search Page is presented to the user's web browser to allow the creation of a query. The Administrator controls the fields that are presented to the user for this purpose. The DBMS will automatically display the correct operators for the query. Submitting the query will cause the DBMS to present the Results Page.



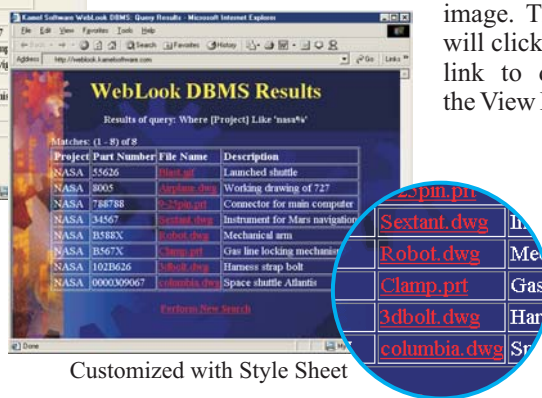
Customized with Style Sheet

Results Page



Standard Results Page

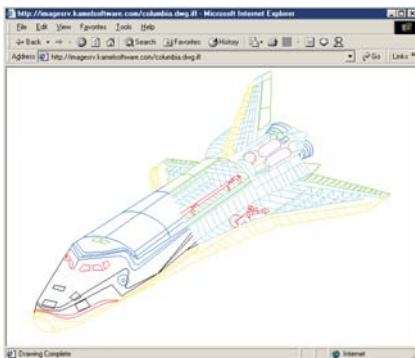
The Results Page contains all the records that meet the search criteria submitted by the user from the Search Page. The fields presented are chosen by the Administrator and includes one that will act as a link to the actual drawing or image. The user will click on the link to display the View Page.



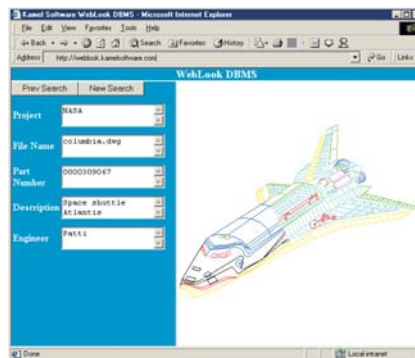
Customized with Style Sheet

View Page

The Administrator has the choice of two different interfaces to present to the user. The first is a full-screen view of the drawing file. The second is a View Page that displays both the drawing file and a data panel that contains the corresponding data record.



Full Screen View



View with Data Panel

Key Features

Database Compatibility

Since the WebLook DBMS uses Microsoft ADO technology, we are able to connect to most databases. Connectively is being continually added for new database types, so feel free to inquire about the data type you need.

- Microsoft Access 95/97/2000
- Microsoft SQL Server

Data Requirements

The database must contain at least one unique numeric field and a field for the filename of the drawing or image file.

Multiple Projects

Create multiple projects, each with their own set of options, to meet the need for different search and/or presentation capabilities.

Search Page

- Specify which fields to present to user.
- Determine field name alias, if any.
- Input custom text header on page.
- Input custom explanation text on page.
- Use Style Sheet to customize page.

Results Page

- Specify which fields to present to user.
- Determine field name alias, if any.
- Define original sort order of results.
- Elect to allow user to resort results.
- Input custom text header on page.
- Input custom explanation text on page.
- Specify number of records to display.
- Use Style Sheet to customize page.

View Page

- Specify whether to view image full screen in the browser or use our interface, complete with data record.
- Specify which fields to present on the data panel.
- Determine field name alias, if any.
- Specify width of data panel.
- Specify height of data fields.
- Input custom text header on page.
- Input custom explanation text on page.

System Requirements

- Windows NT 4.0 or later.
- Microsoft IIS 3.0 or later.
- WebLook 2000 or later.
- Client browser:
 - Microsoft Internet Explorer
 - Netscape Navigator



Kamel Software
www.kamelsoftware.com

2822 Forsyth Road, Suite 201
Winter Park, FL 32792
Phone: 407-672-0202
Fax: 407-672-0416
Email: sales@kamelsoftware.com